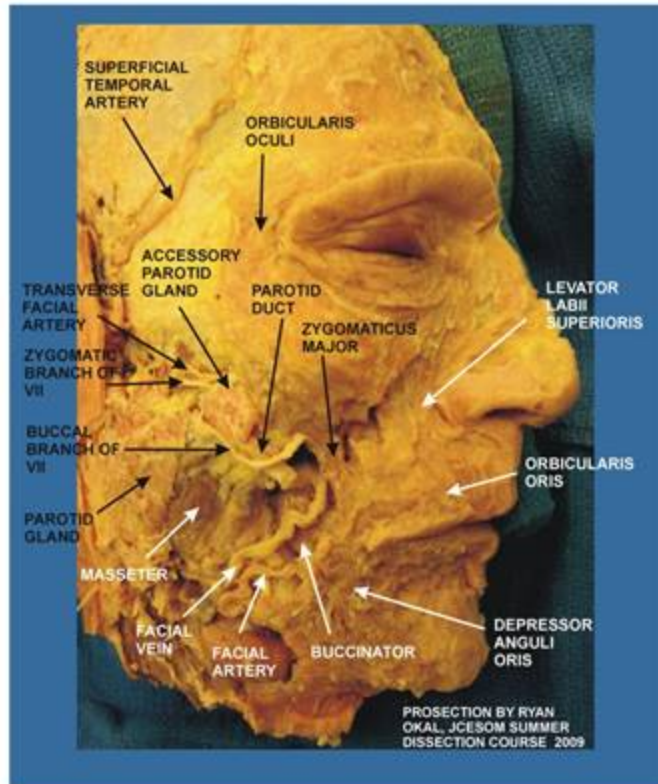


HEAD AND NECK PROSECTIONS 2025

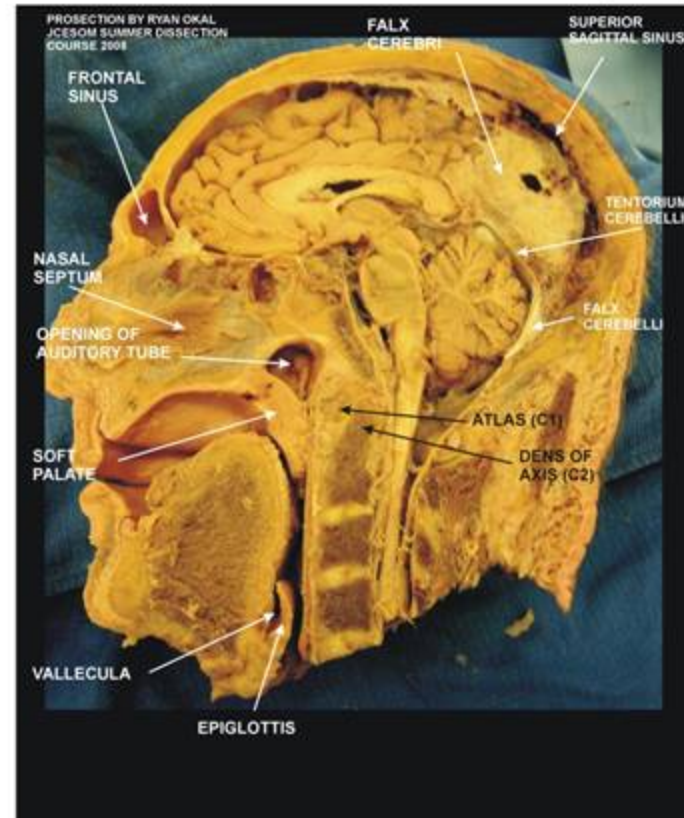
FACIAL MUSCLES

312

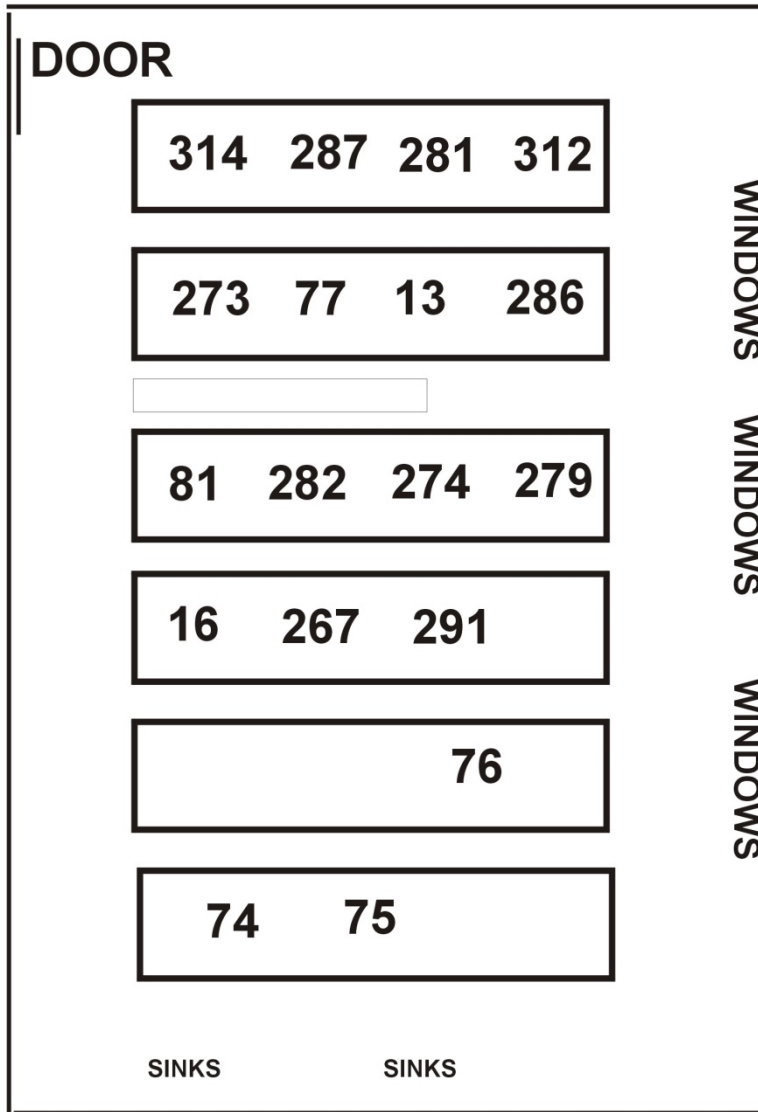


MEDIAL VIEW OF BIASECTED HEAD

312



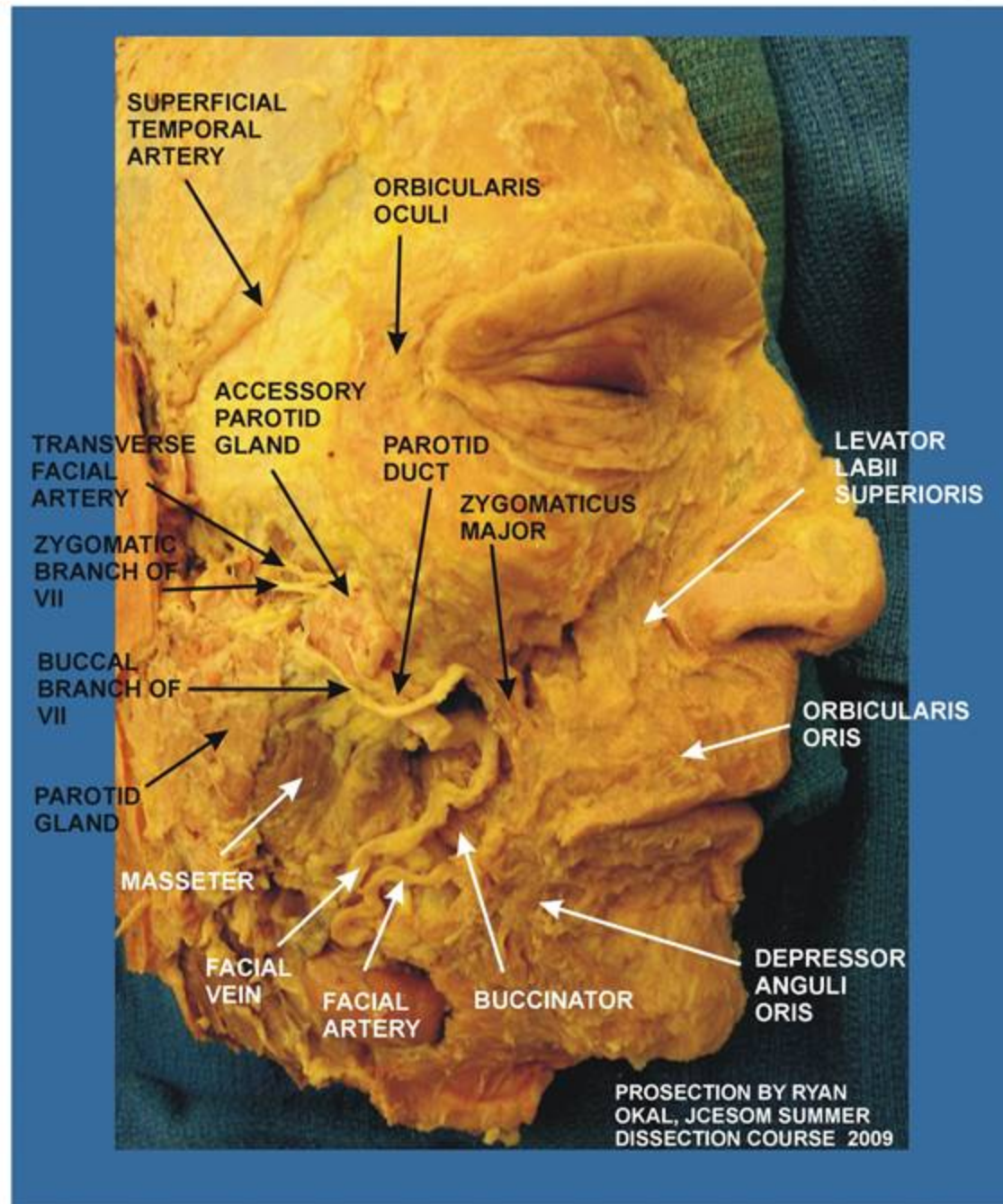
MAP OF LOCATION OF PROSECTIONS IN HISTOLOGY AREA 2025



FACIAL MUSCLES

312

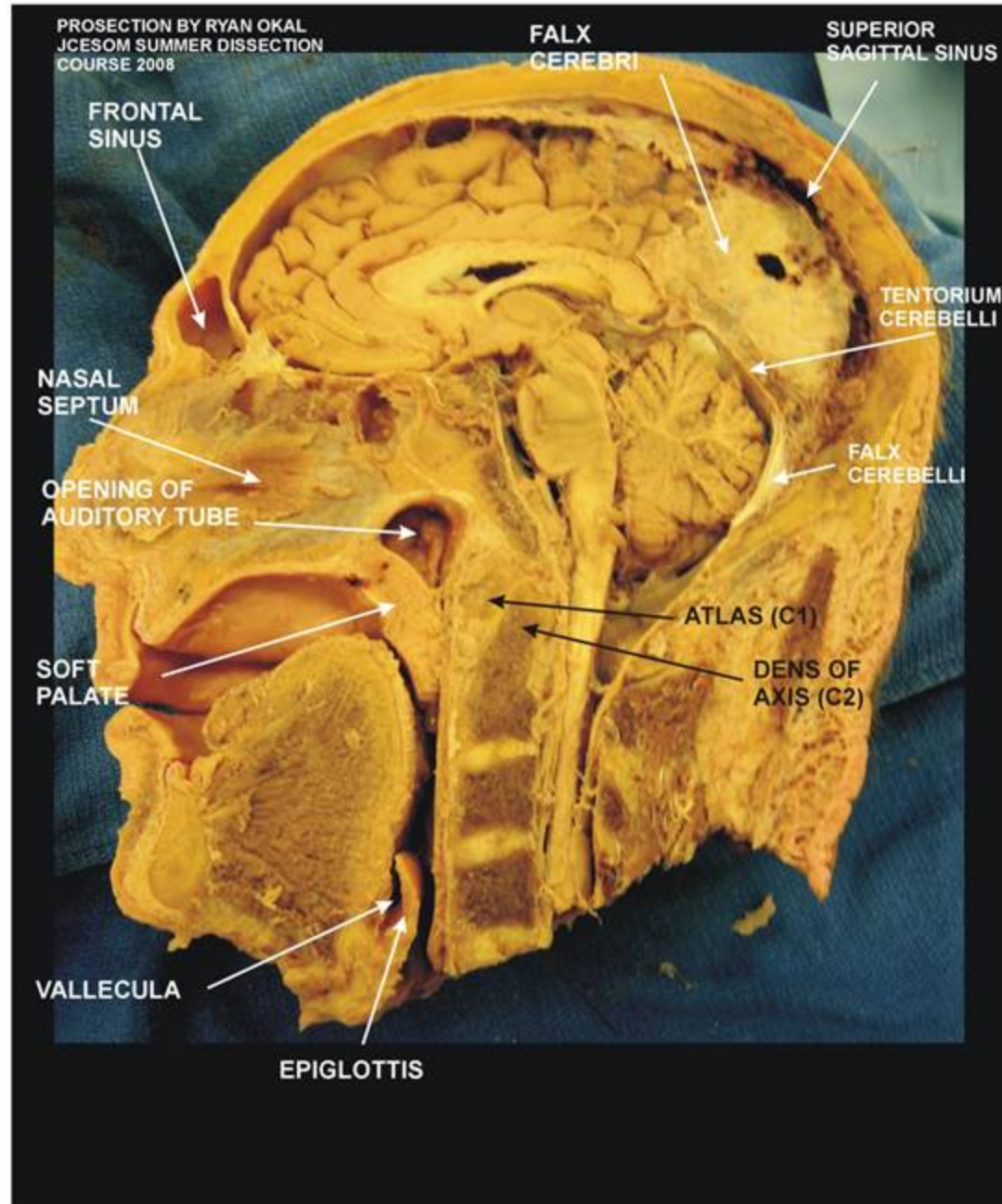
312



MEDIAL VIEW OF BISECTED HEAD

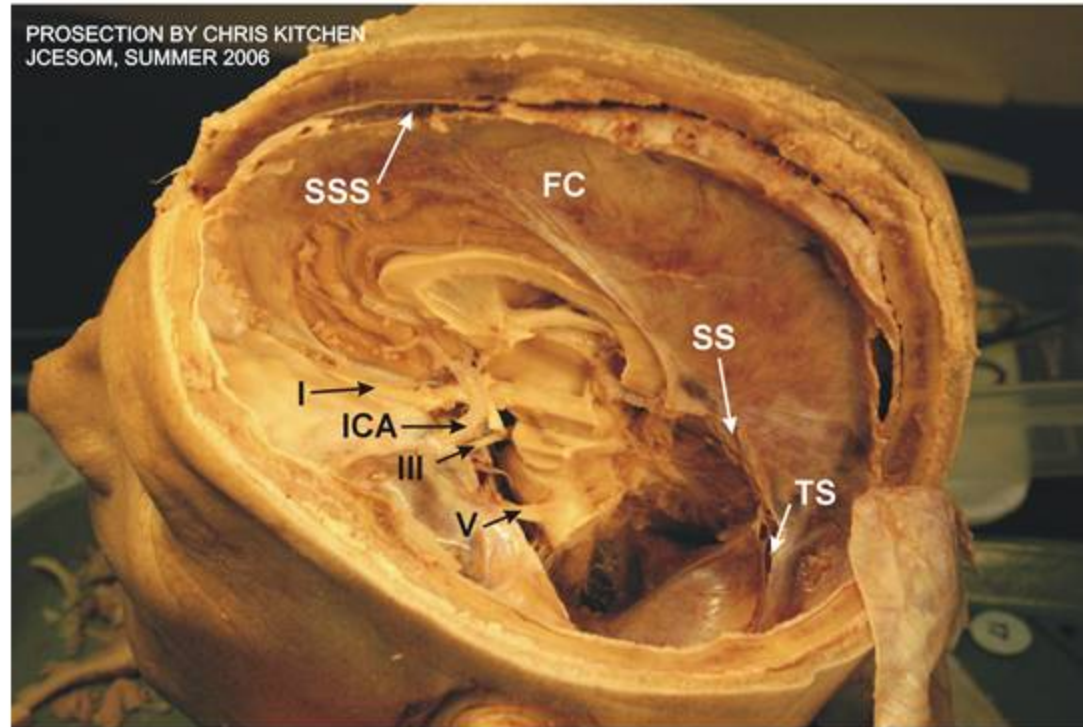
312

312



BRAIN (HEMISECTED) IN CRANIAL CAVITY

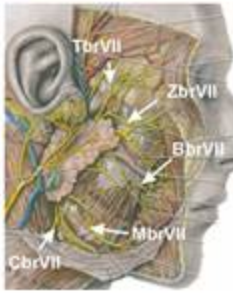
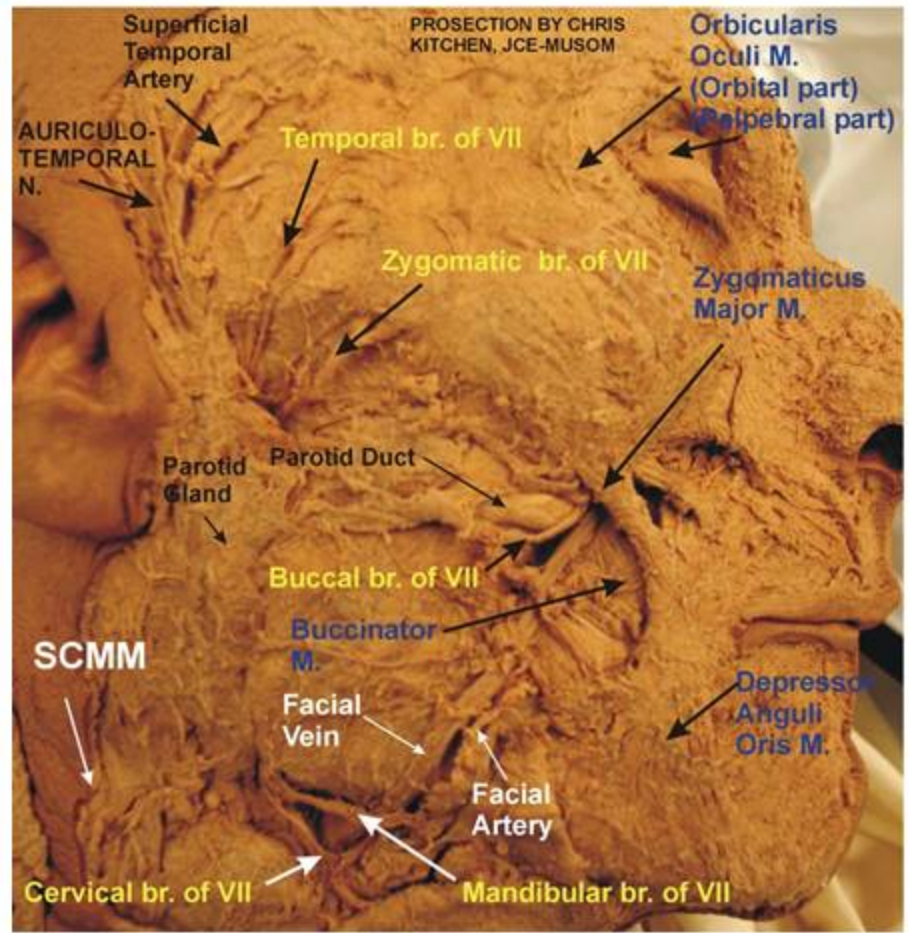
267



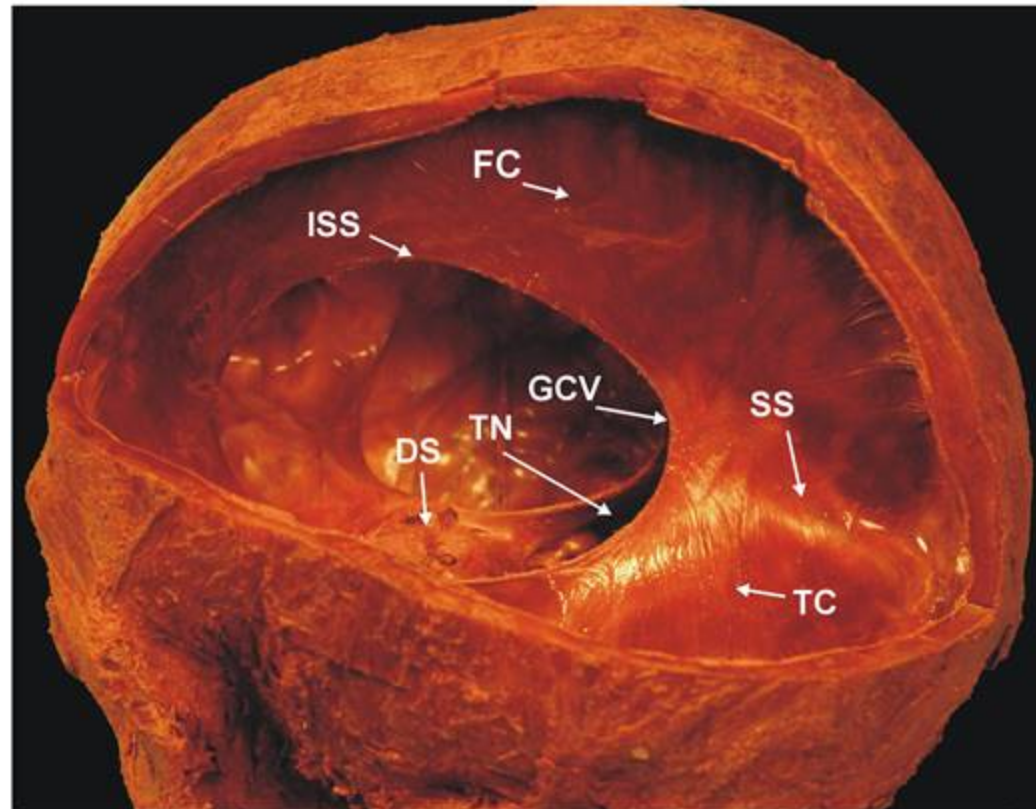
- I - OLFACTORY TRACT
- ICA - INTERNAL CAROTID ARTERY
- III - OCULOMOTOR NERVE
- V - TRIGEMINAL NERVE
- SSS - SUPERIOR SAGITTAL SINUS
- FC - FALX CEREBRI
- SS - STRAIGHT SINUS
- TS - TRANSVERSE SINUS

BRANCHES OF FACIAL NERVE (VII) AND SUPERFICIAL FACE

267



- Superficial Temporal Artery
- Auriculotemporal Nerve
- TbrVII - Temporal branch of VII
- ZbrVII - Zygomatic branch of VII
- BbrVII - Buccal branch of VII
- MbrVII - Mandibular branch of VII
- CbrVII - Cervical branch of VII
- Orbicularis oculi (orbital part)
- Zygomaticus major
- Levator Labii Superioris
- Depressor Anguli Oris
- Buccinator Muscle
- Facial Vein
- Facial Artery
- Parotid Gland
- Parotid Duct
- Sternocleidomastoid M.

DURAL REFLECTIONS AND VENOUS SINUSES**279**

FC - FALX CEREBRI

TC - TENTORIUM CEREBELLI

ISS - LOCATION OF INFERIOR SAGITTAL SINUS

SS - LOCATION OF STRAIGHT SINUS

GCV - OPENING OF GREAT CEREBRAL VEIN OF GALEN

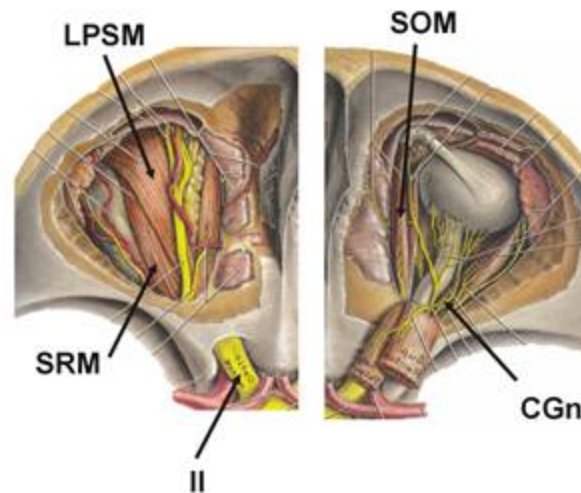
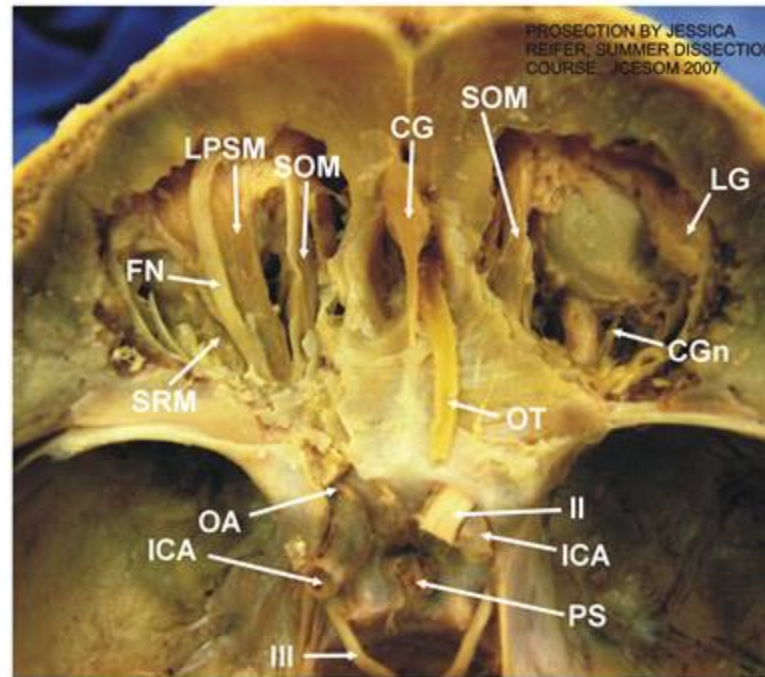
DS - DIAPHRAGMA SELLA

TN - TENTORIAL NOTCH

ORBIT: SUPERFICIAL AND DEEP DISSECTIONS

287

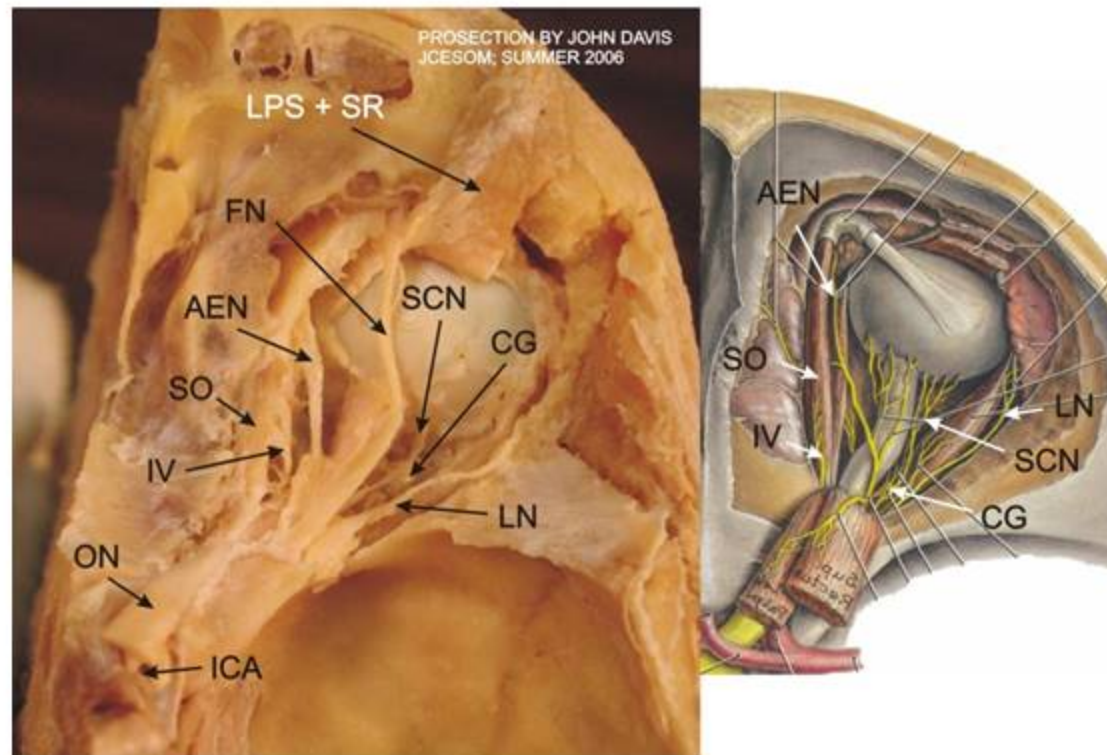
287



ICA - INTERNAL CAROTID ARTERY
 III - OCULOMOTOR NERVE
 PS - PITUITARY STALK
 II - OPTIC NERVE
 OT - OLFACATORY TRACT
 CGn - CILIARY GANGLION
 LG - LACRIMAL GLAND
 CG - CRISTA GALLI
 SOM - SUPERIOR OBLIQUE MUSCLE
 LPSM - LEVATOR PALPEBRAE SUPERIORIS M.
 FN - FRONTAL NERVE
 SRM - SUPERIOR RECTUS MUSCLE
 OA - OPHTHALMIC ARTERY

PROSECTION OF ORBIT - Deep Dissection

273



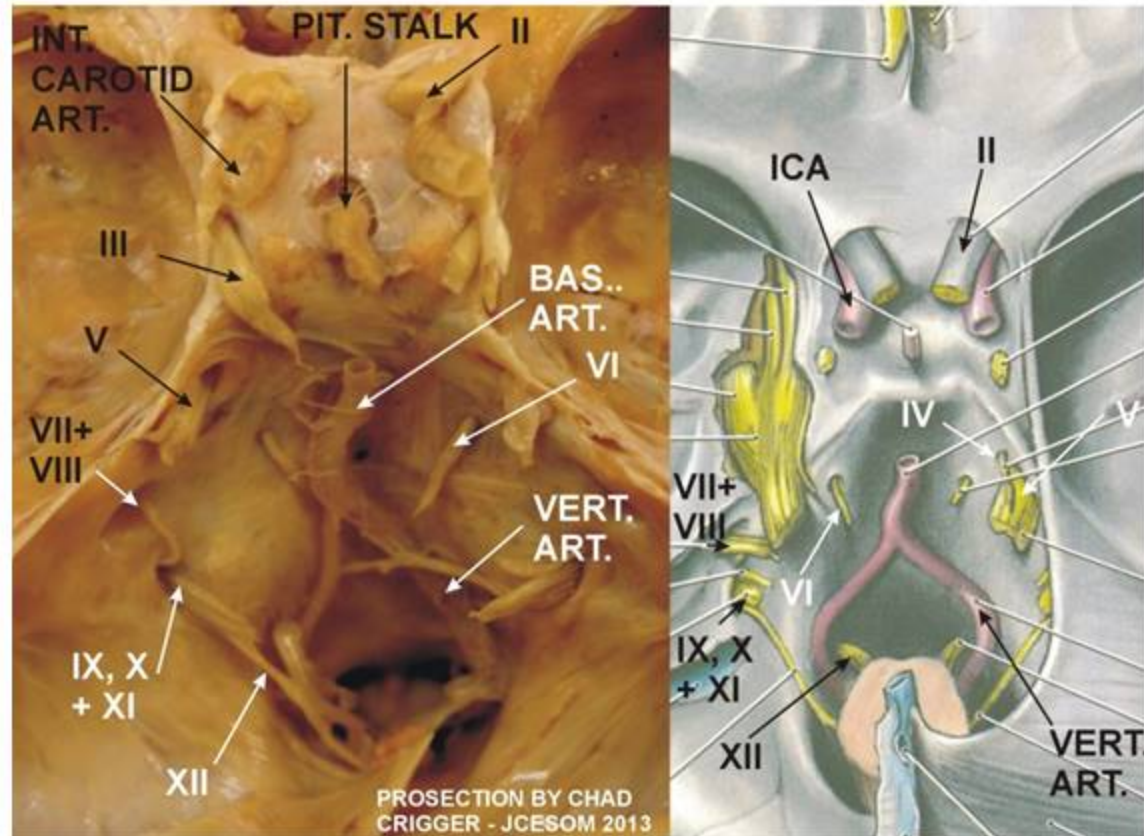
LPS + SR - LEVATOR PALPEBRAE SUPERIORIS
 AND SUPERIOR RECTUS MUSCLES REFLECTED
 IV - TROCHLEAR NERVE
 SO - SUPERIOR OBLIQUE MUSCLE
 AEN - ANTERIOR ETHMOIDAL NERVE
 FN - FRONTAL NERVE
 CG - CILIARY GANGLION
 SCN - SHORT CILIARY NERVES
 LN - LACRIMAL NERVE
 ON - OPTIC NERVE
 ICA - INTERNAL CAROTID ARTERY

NOTE:
 MANY STRUCTURES
 DESSICATED
 BUT INTACT
 CILIARY GANGLION

CRANIAL NERVES

13

13



VERT. ART. - Vertebral Artery
VII - Facial Nerve
VIII - Vestibulocochlear Nerve
IX - Glossopharyngeal Nerve
X - Vagus
XI - Accessory
XII - Hypoglossal

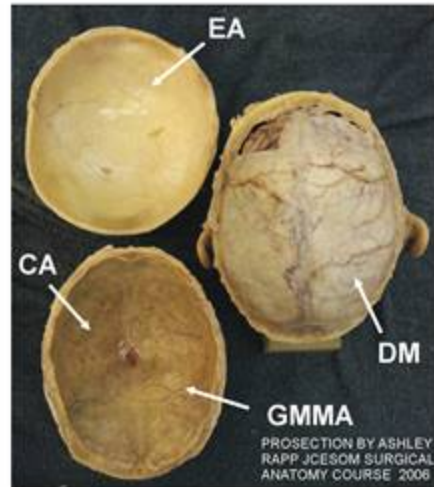
INT. CAROTID ART. - Internal Carotid Artery
BAS. ART. - Basilar Artery
II - Optic Nerve
V - Trigeminal
VI - Abducens

282

SCALP, CALVARIUM AND DURA MATER

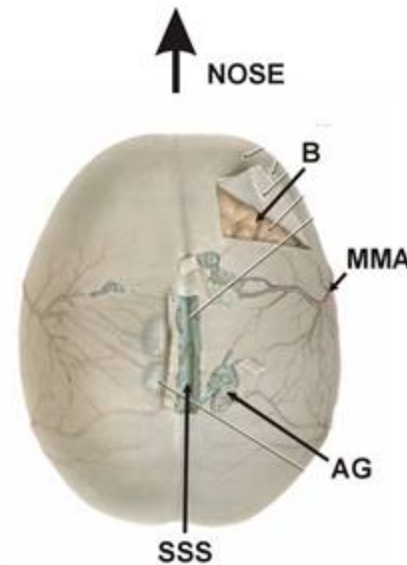
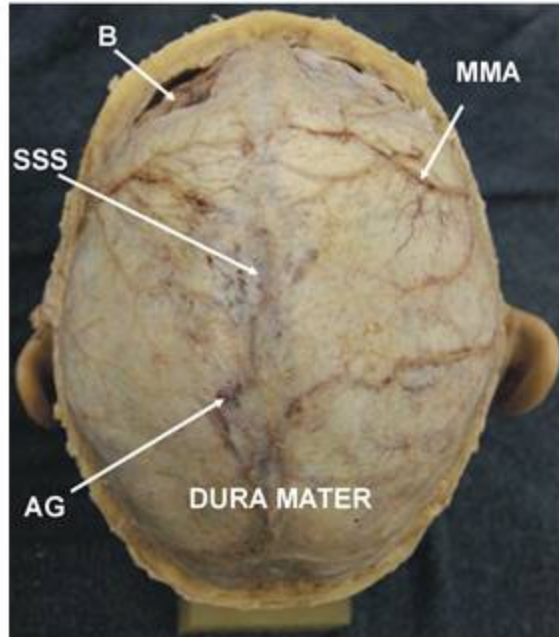
282

INNER SIDE OF CALVARIUM AND SCALP



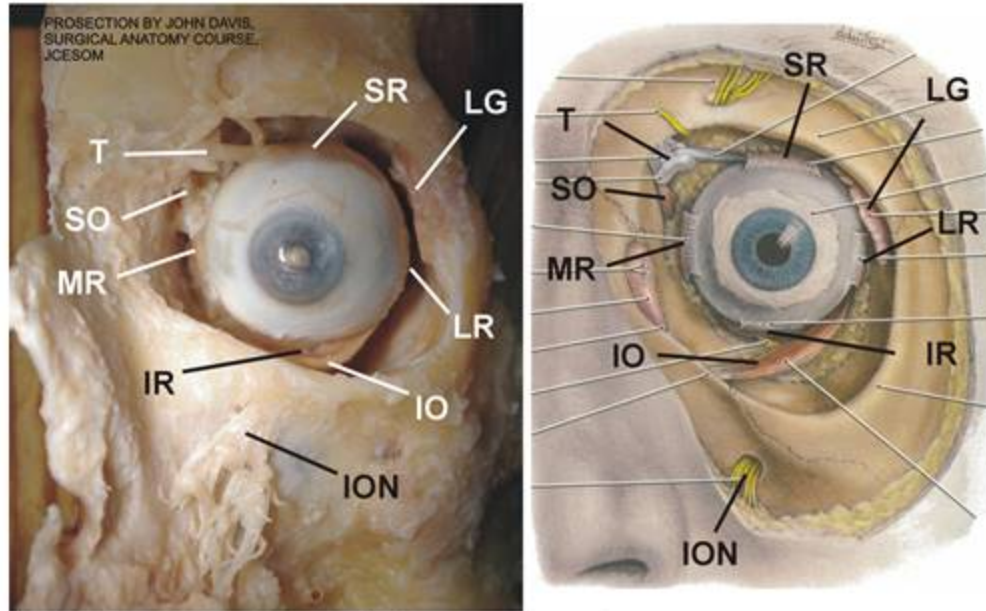
- EA - EPICRANIAL APONEUROSIS (ON INNER SIDE OF SCALP)
- CA - CALVARIUM WITH DURA MATER REMOVED
- GMMA - GROOVE FOR MIDDLE MENINGEAL ARTERY
- DM - DURA MATER
- B - BRAIN
- SSS - SUPERIOR SAGITAL SINUS
- AG - ARACHNOID GRANULATION
- MMA - MIDDLE MENINGEAL ARTERY

DURA MATER AT HIGH MAG



PROSECTION OF ORBIT - ANTERIOR VIEW

274



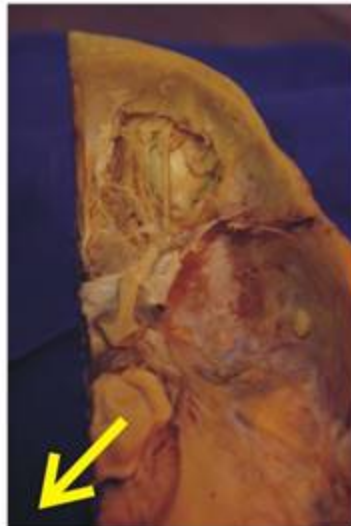
- SO - Superior oblique muscle
- T - Trochlea (pulley for SO tendon)
- SR - Superior rectus muscle (insertion)
- LR - Lateral rectus muscle (insertion)
- IR - Inferior rectus muscle (insertion)
- IO - Inferior oblique muscle
- MR - Medial rectus muscle (insertion)
- LG - Lacrimal Gland
- ION - Infraorbital nerve (V2)

Note: tilt prosection or gently move eye to see rectus muscles

ORBIT: DEEP VIEW AND TROCHLEAR NERVE 74

74

PLEASE NOTE:
THIS IS A VERY
FRAGILE
PROSECTION!



EVER SO GENTLY
DISPLACE
THE BRAIN STEM
(SLIGHTLY) TO
SEE THE
COURSE OF
THE TROCHLEAR
NERVE



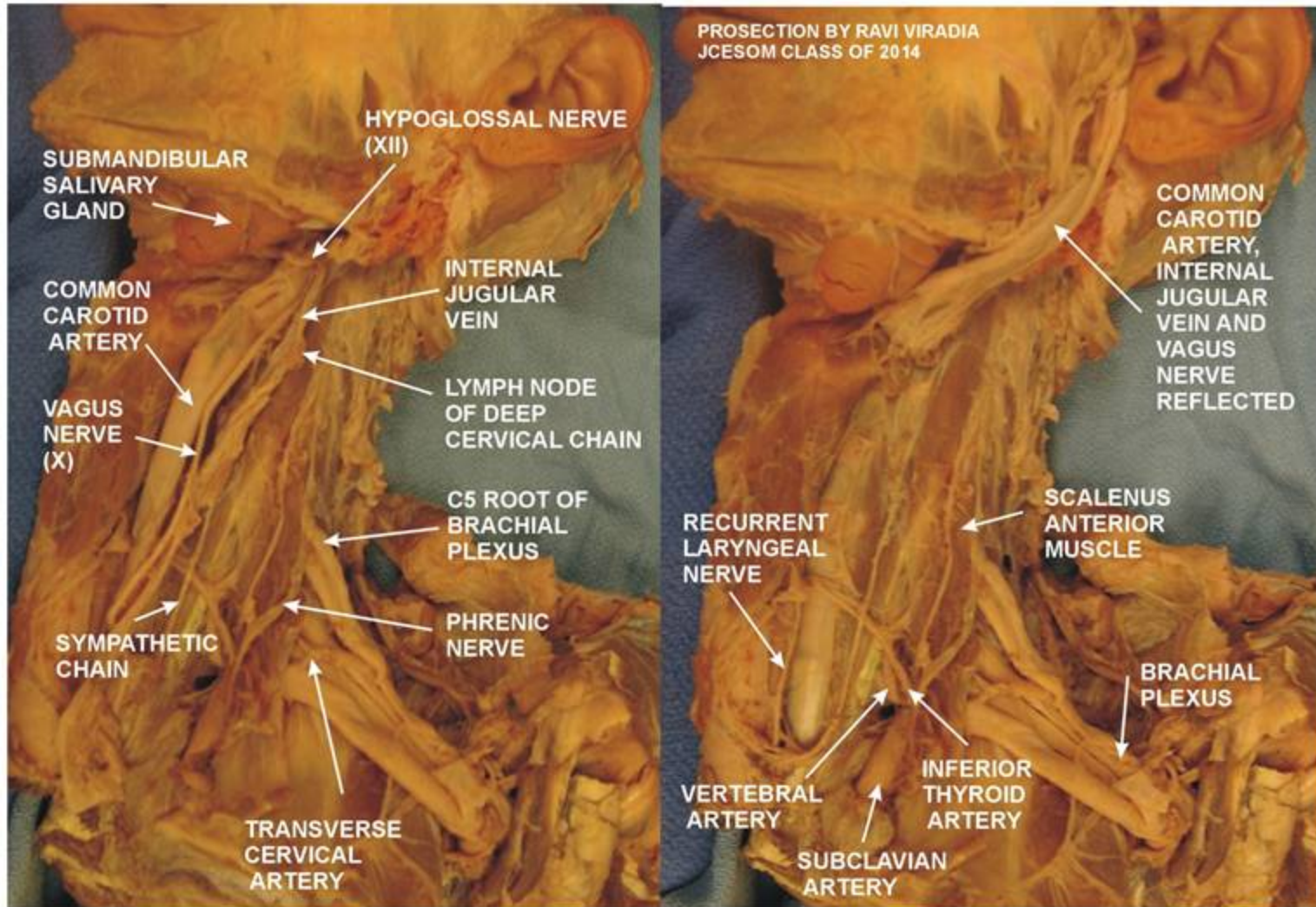
SUPERFICIAL AND DEEP NECK

SUPERFICIAL VIEW

DEEP VIEW

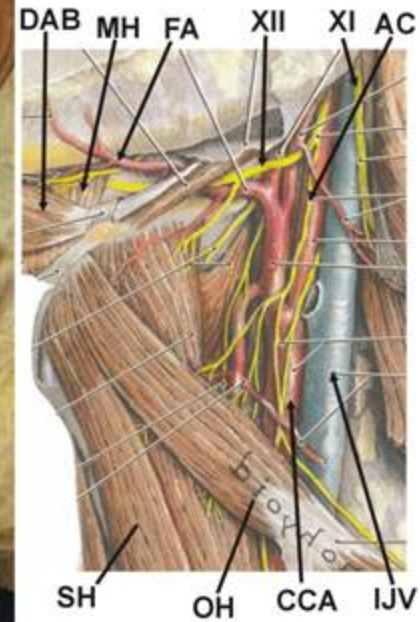
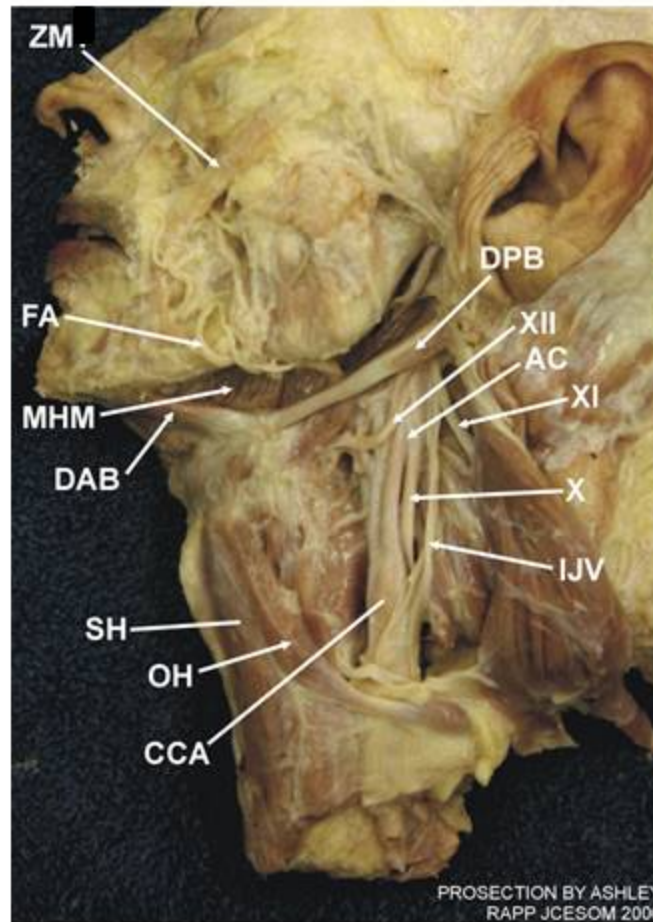
16

16



ANTERIOR NECK: ACCESSORY NERVE

281



FA - FACIAL ARTERY
 MHM - MYLOHYOID MUSCLE
 DAB - DIGASTRIC ANTERIOR BELLY
 DPB - DIGASTRIC POSTERIOR BELLY
 SH - STERNOHYOID
 OH - OMOHYOID
 CCA - COMMON CAROTID ARTERY

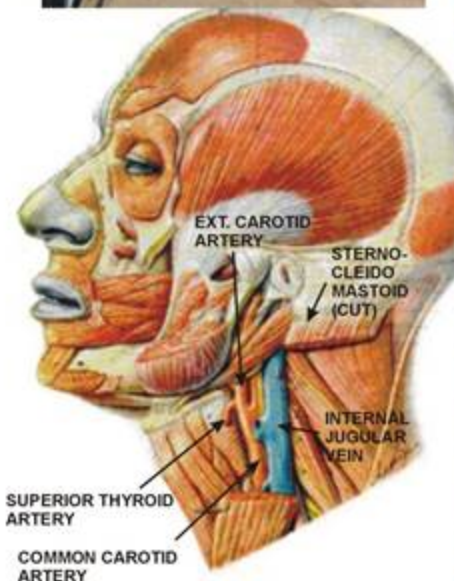
XII - HYPOGLOSSAL NERVE
 AC - ANSA CERVICALIS
 XI - ACCESSORY NERVE
 X - VAGUS NERVE
 IJV - INTERNAL JUGULAR VEIN
 ZM - ZYGOMATICUS MAJOR

SURGICAL PROSECTION: CAROTID ENDARTERECTOMY

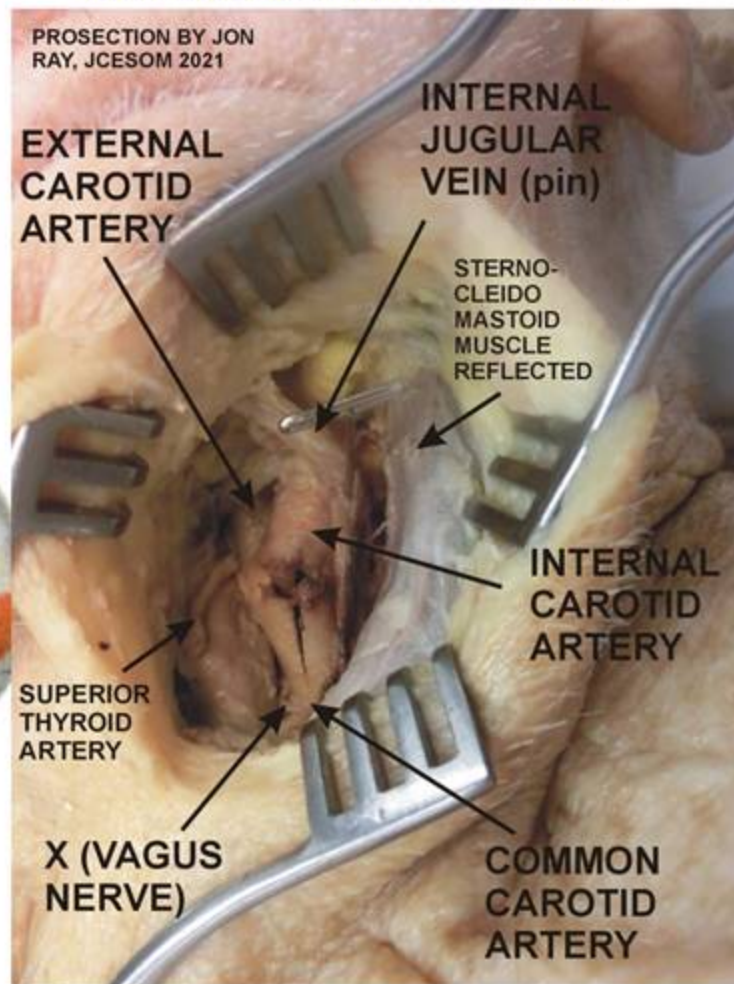
76

76

SKIN INCISION ANTERIOR TO
STERNOCLEIDOMASTOID MUSCLE



CAROTID SHEATH INCISED TO
EXPOSE CONTENTS; ARTERY
INCISED FOR PLAQUE REMOVAL

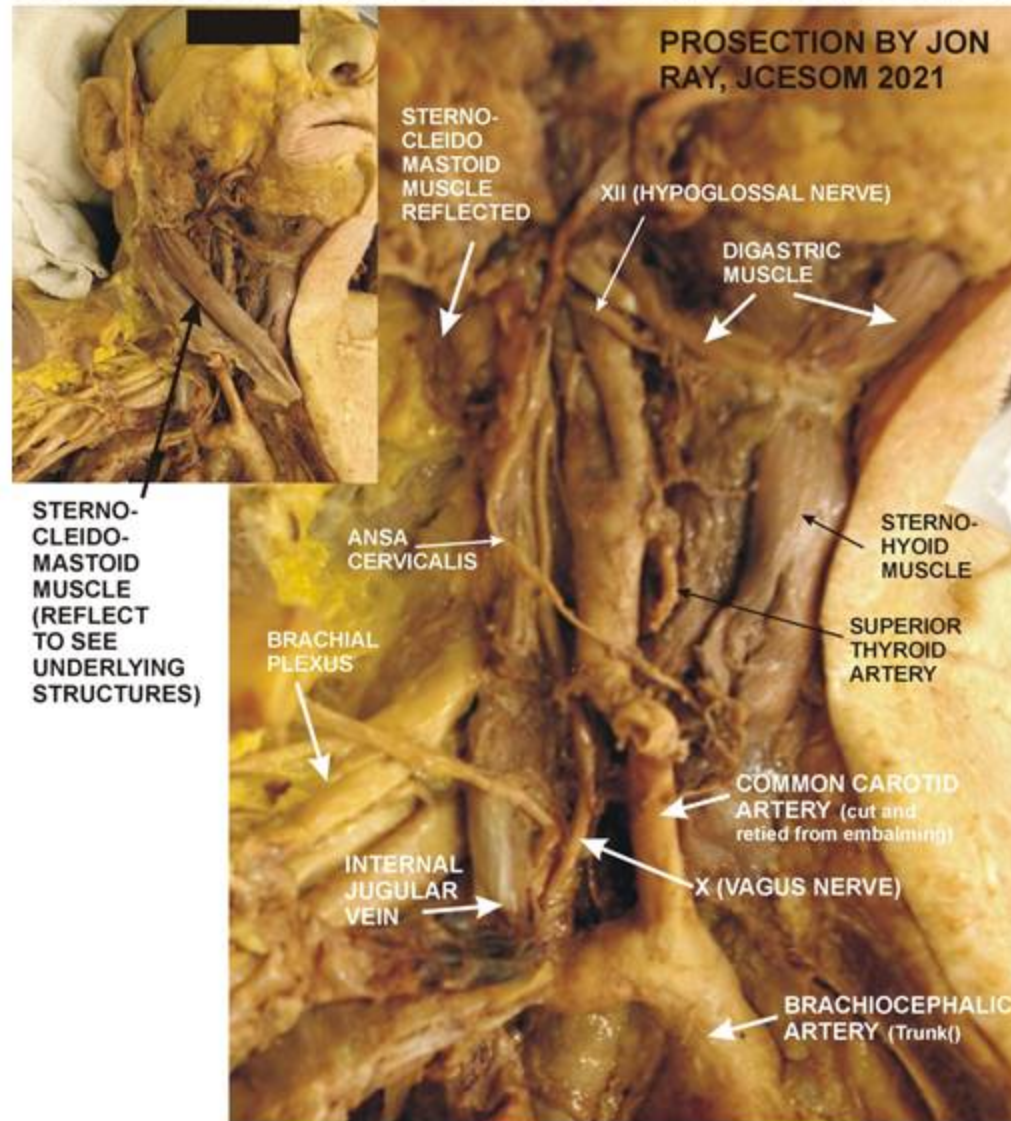


DISSECTION OF ANTERIOR NECK

76

76

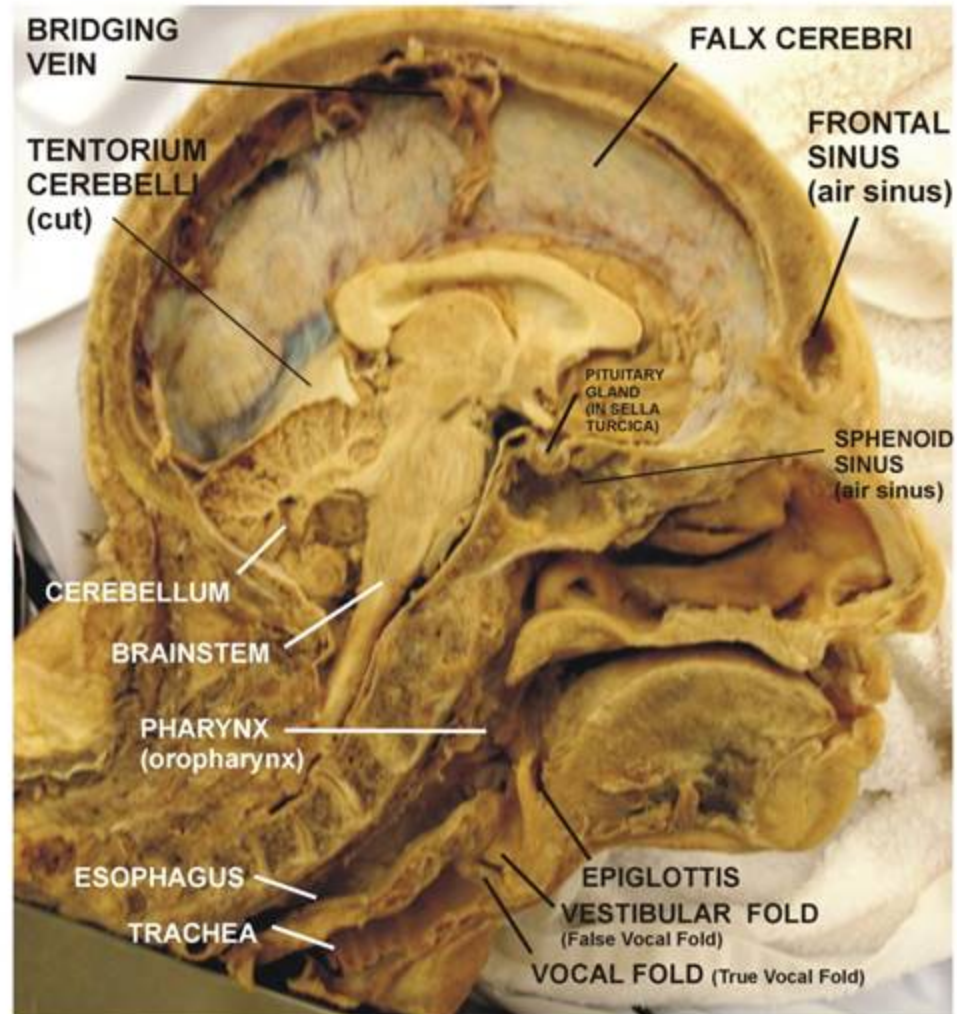
NECK DISSECTED ON RIGHT SIDE OF SURGICAL ANATOMY PROSECTION



BISECTED HEAD WITH INTACT FALX CEREBRI

75

75

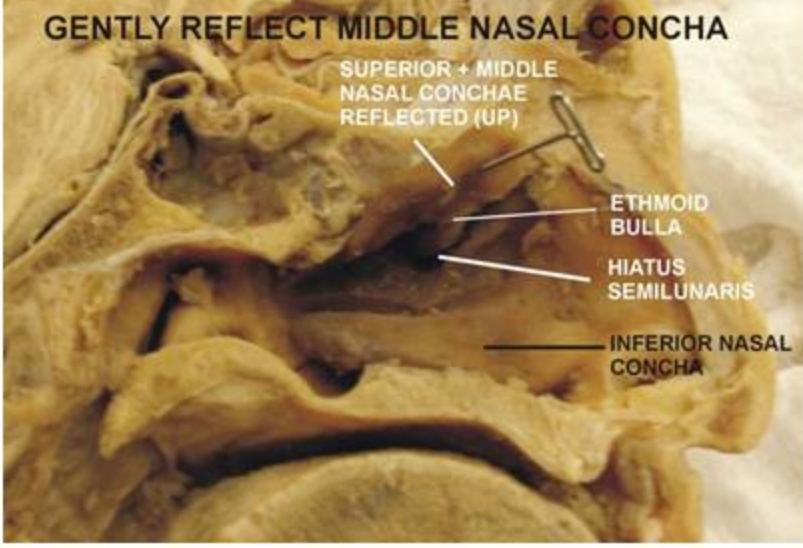
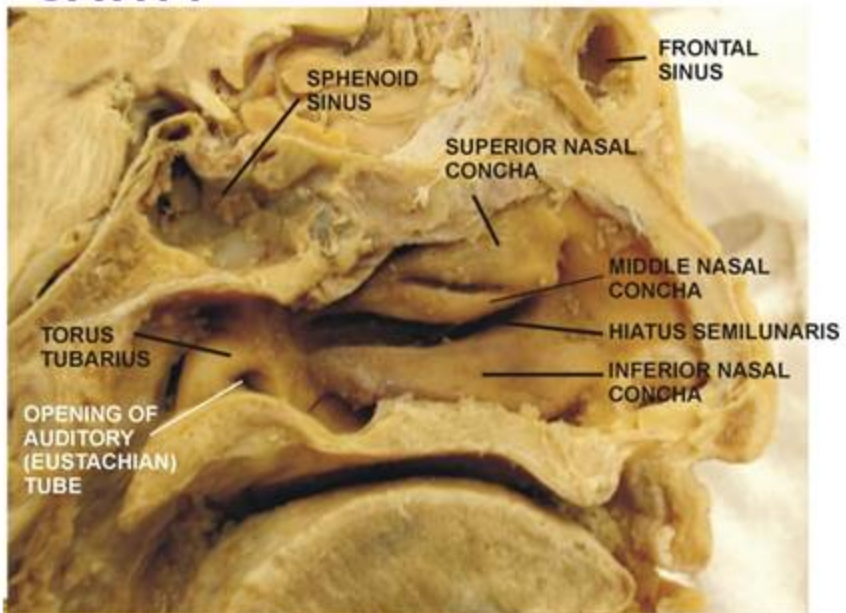


Note: Bridging Vein - cut when brain removed but still attached and entering Sup. Sagittal Sinus

75

BISECTED HEAD: NASAL CAVITY

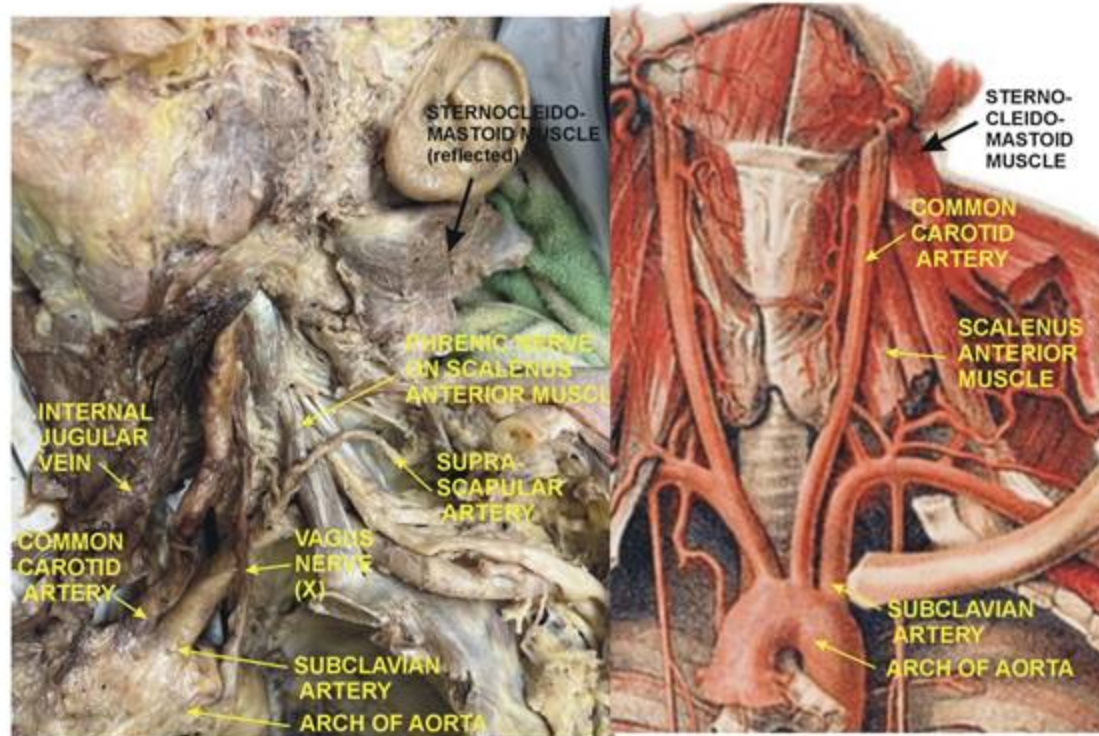
75



DEEP NECK

94

94

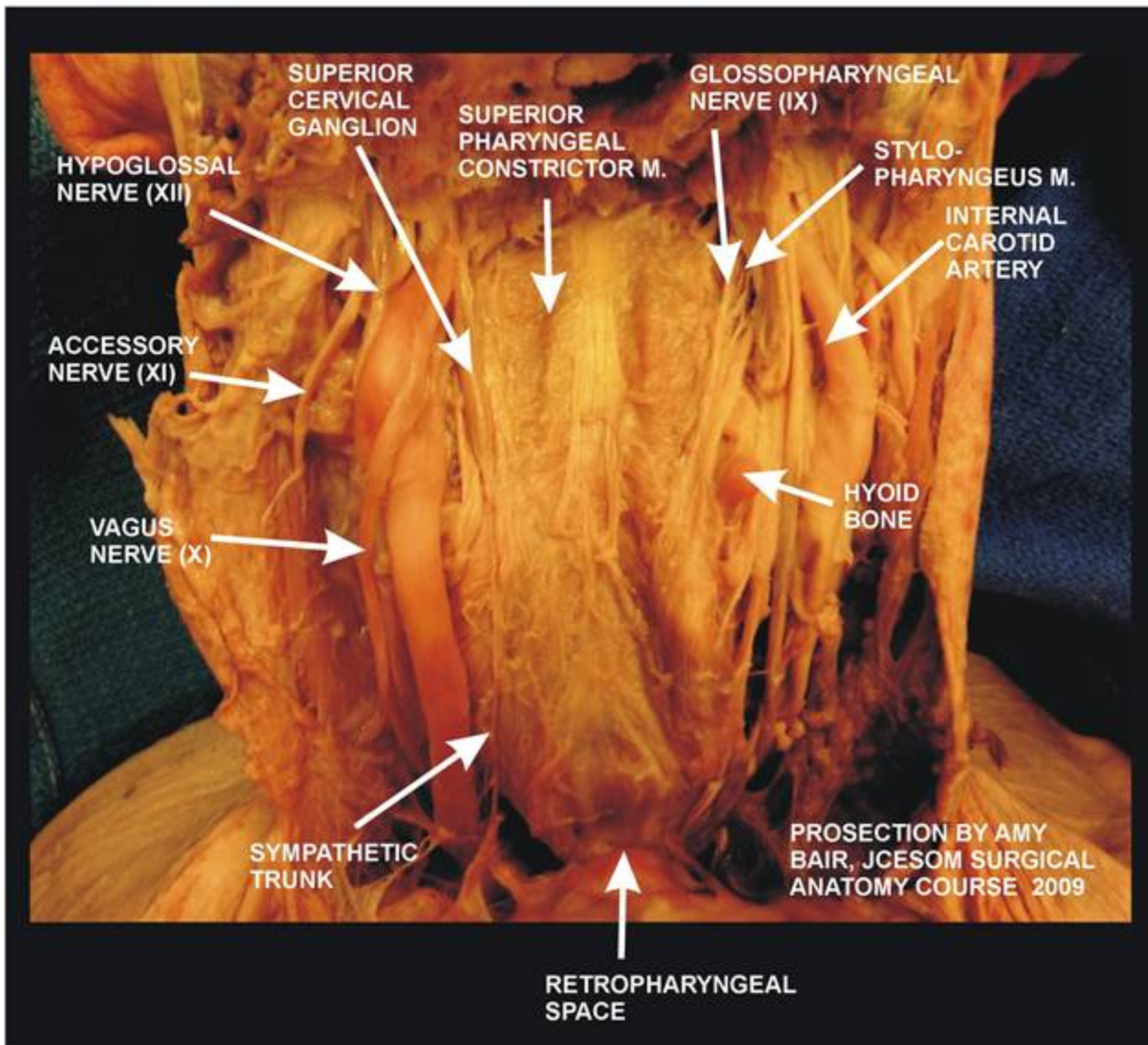


PROSECTOR BY SENECA WILLIAMS, JSCSOM 2022

POSTERIOR PHARYNX AND RETROPHARYNGEAL SPACE

314

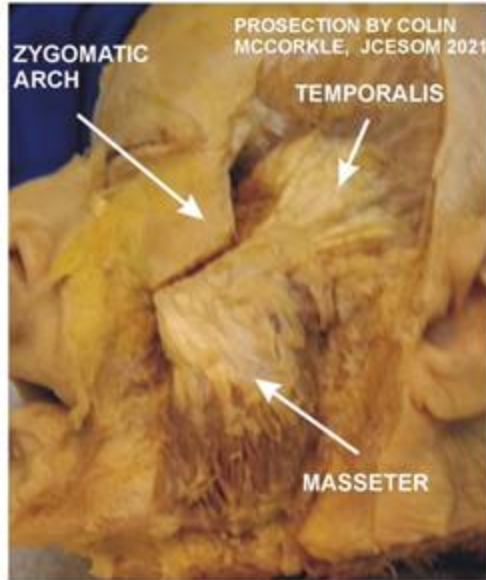
314



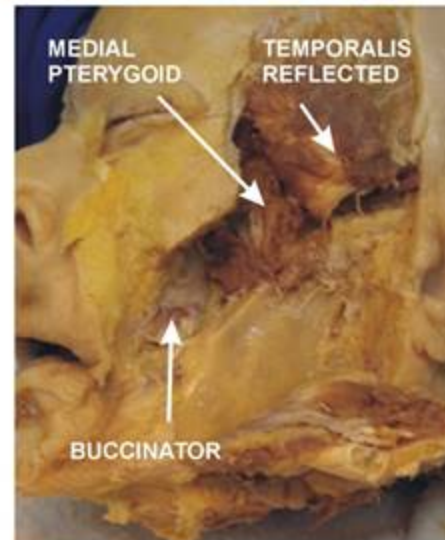
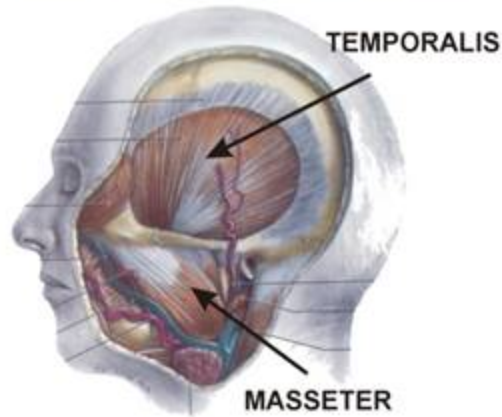
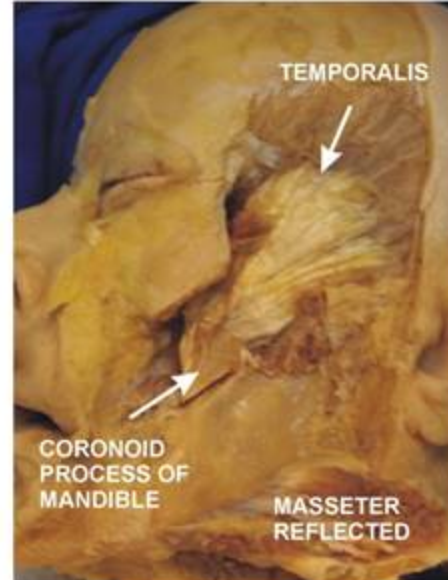
MUSCLES OF MASTICATION

81

81



CAREFULLY REFLECT ZYGOMATIC ARCH AND MASSETER MUSCLE

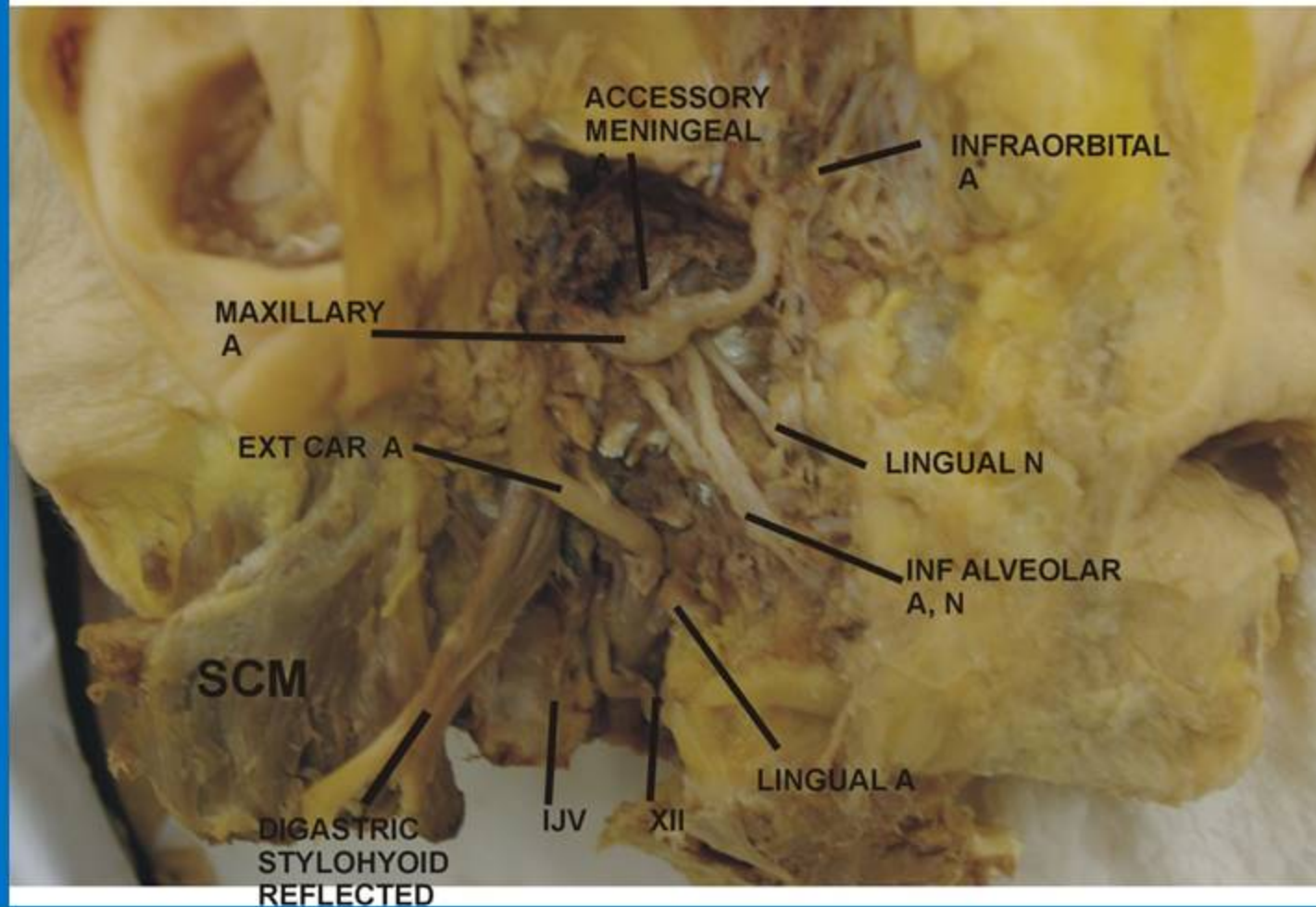


INFRATEMPORAL FOSSA PROSECTION

81

Colin McCorkle, 2021

81



BRAINSTEM IN CRANIAL CAVITY

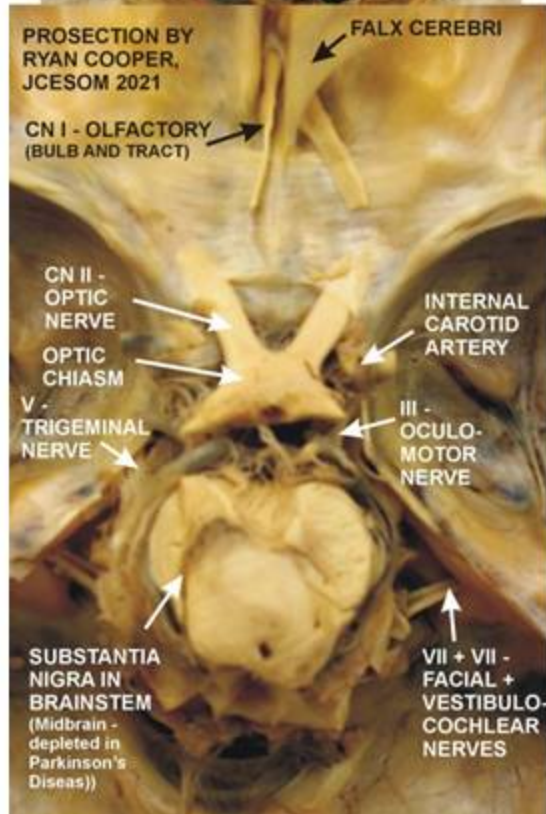
77

77

77 Ryan
Cranial Nerves



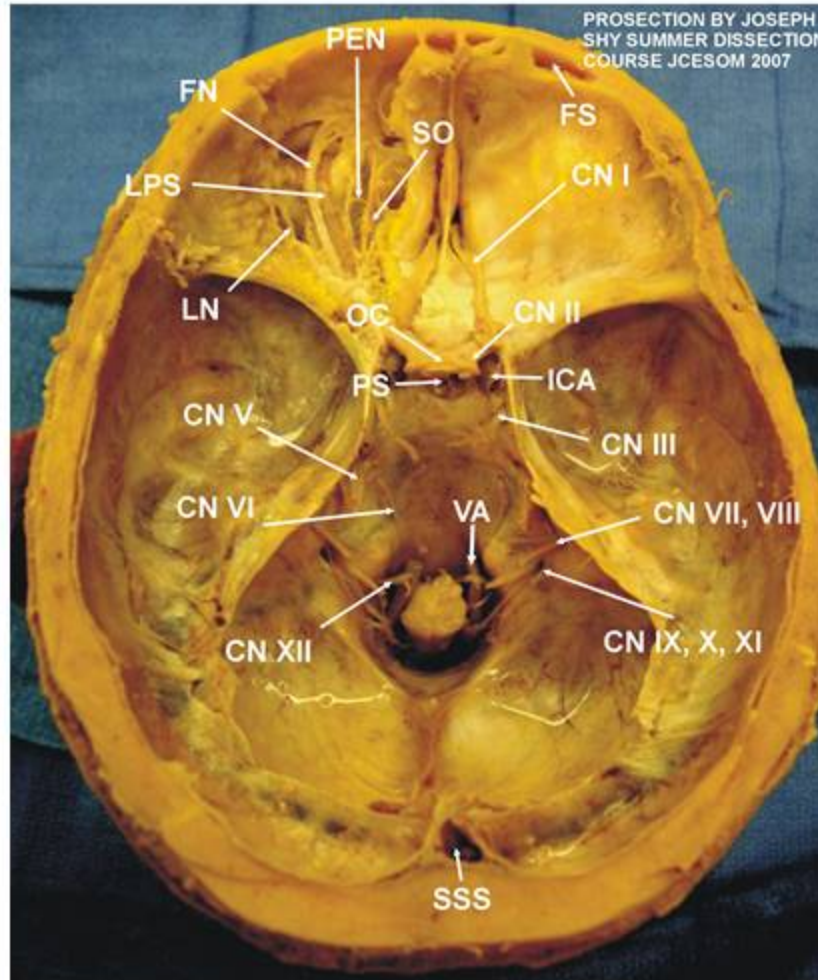
ORIENT: CALVARIUM,
BRAIN REMOVED;
BRAINSTEM,
EXPOSED IN
CRANIAL CAVITY



NOTE:
PLEASE
TREAT
THIS
PROSECTIONS
GENTLY;
DO NOT
PULL ON
BRAINSTEM

CRANIAL NERVES AND SUPERFICIAL ORBIT

286



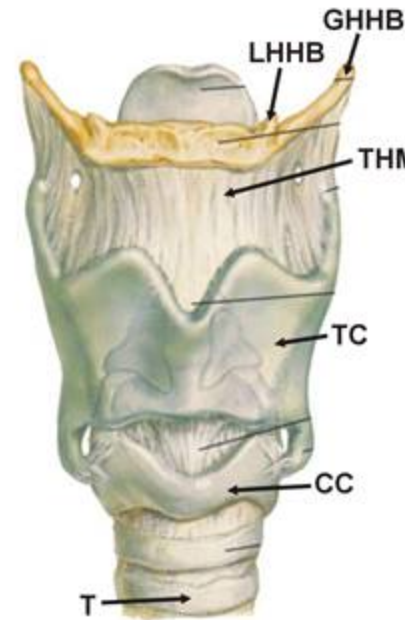
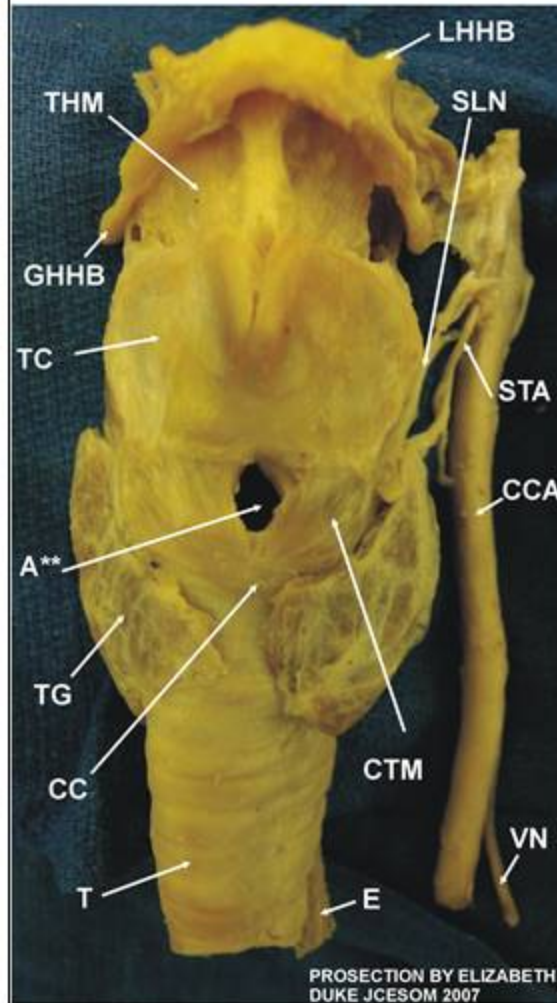
286

- | | |
|--|---------------------------------|
| SSS - SUPERIOR SAGITTAL SINUS | PS - PITUITARY STALK |
| CN XII - HYPOGLOSSAL NERVE | ICA - INTERNAL CAROTID ARTERY |
| CN IX, X, XI - CRANIAL NERVES 9, 10, 11 | CN II - OPTIC NERVE |
| CN VII, VIII - FACIAL, VESTIBULO-COCHLEAR NERVES | OC - OPTIC CHIASM |
| VA - VERTEBRAL ARTERY | CN I - OLFACTORY NERVE |
| FS - FRONTAL SINUS | SO - SUPERIOR OBLIQUE MUSCLE |
| FN - FRONTAL NERVE | PEN - POSTERIOR ETHMOIDAL NERVE |
| LPS - LEVATOR PALPEBRAE SUPERIORIS MUSCLE | CN III - OCULOMOTOR NERVE |
| LN - LACRIMAL NERVE | CN V - TRIGEMINAL NERVE |
| | CN VI - ABDUCENS NERVE |

291

LARYNX: ANTERIOR VIEW

291



NOTE: A** - AIRWAY IS CUT IN CRICOTHYROID MEMBRANE IN CRICOTHYROTOMY; THIS EMERGENCY PROCEDURE AVOIDS BLEEDING THAT CAN OCCUR IN TRACHEOTOMY

PROSECTIONS BY ELIZABETH DUKE JCESOM 2007

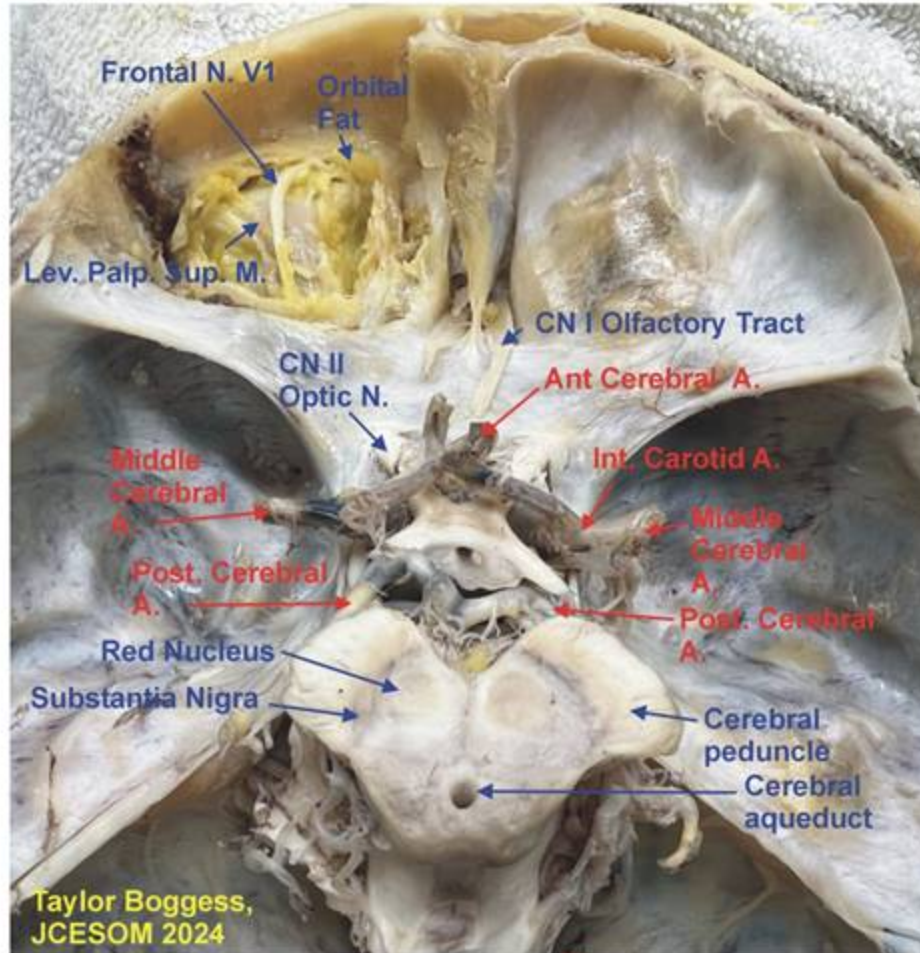
THM - THYROID MEMBRANE
GHHB - GREATER HORN OF HYOID BONE
LHHB - LESSER HORN OF HYOID BONE
STA - SUPERIOR THYROID ARTERY
TC - THYROID CARTILAGE
SLN - SUPERIOR LARYNGEAL NERVE
CTM - CRICOTHYROID MUSCLE

CC - CRICOID CARTILAGE
CCA - COMMON CAROTID ARTERY
TG - THYROID GLAND
T - TRACHEA
E - ESOPHAGUS
VN - VAGUS NERVE

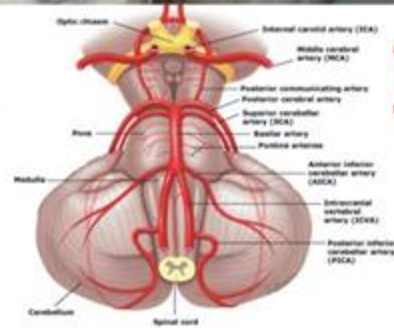
BRAINSTEM/ORBIT IN CRANIAL CAVITY

116

116



ORIENT



LEVEL OF VIEW