

INTRODUCTION TO GROSS ANATOMY 2021

(DURING THE PANDEMIC)

OUTLINE

- 1. LOCATION OF FILES AND CONTACTING DR. ZILL**
- 2. APPROACH AND GOAL: CLINICAL GROSS ANATOMY**
- 3. ORIENTATION TO PROSECTIONS, PICTURES AND VIRTUAL TOUR OF GROSS LAB**
- 4. SESSIONS – INDEPENDENT STUDY OF VIDEOS, ETC. FOLLOWED BY ZOOM SESSION DISCUSSIONS (EVERY 1-3 SCHEDULED SESSIONS)**
- 5. OFFICE HOURS**

1. CONTACT – Dr. Sasha Zill

email: zill@marshall.edu

fastest response (also cc): sensillum@aol.com

LOCATION OF FILES – ZILLANATOMY.COM

Download files (videos) from web:

http://www.zillanatomy.com/Pandemic_anatomy.htm

office: MEB (CEB) 305

office (in Dr. Li's lab): BBSC 212

2. APPROACH AND GOAL: CLINICAL GROSS ANATOMY

GOAL

- 1. My goal is to make study of material in Gross Anatomy as efficient, user-friendly and clinically focused as possible and to prepare students for the Step One Board Examinations.**
- 2. Studying Gross Anatomy – Gross Anatomy is a basic part of the language of medicine. Anatomy is the science of body structure. On average, students learn 10,000 new words in the first two years of medical school.**
- 3. Problem – For many students, Anatomy is a ‘foreign’ language. Language acquisition requires repetition.**

APPROACH FOR DR. ZILL'S LECTURES, LABS

1. Multi-modal learning - Every student has their own approach to learning. The goal is to make as many tools available as possible to help you learn Anatomy. The focus of each section is a Clinical Anatomy chart, which can also aid in review for the Step 1 Board Examination.

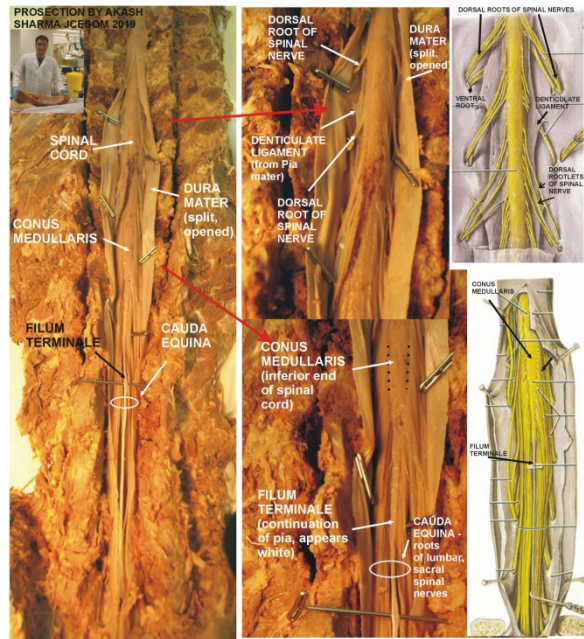
2. Independent learning – All sessions have ‘flipped’ lecture format and videos. For each area there are 1) summary clinical anatomy charts, 2) outline handouts, 3) Powerpoint files, 4) videos and 5) practice questions. Please study this material before the discussion sessions.

3. Laboratory – Unfortunately, lab sessions during the pandemic will only permit study of prosections. Dissections by students will only occur when it is safe. Videos will be available that review the prosections.

3. ORIENTATION TO PROSECTIONS, PICTURES

SPINAL CORD

44



Prosection done by Akash Sharma, MD, ObGyn, JCESOM Class of 2019

- 1- Prosections are dissections done for demonstration (by medical students)
- 2 - Located in bags, trays in Gross Lab
- 3- Please handle carefully
- 4- **Please spray with wetting solution when you are done studying. Put back in bag**

Lab - NO DRESS CODE

- 1- Wear gloves, lab coat, **old shoes (sneakers), washable clothes** - fixatives ruin good shoes.
- 2- Ventilation - masks and protective equipment available in lab.
- 3- After lab - shower, wash your hair.

NOTE: FOR EXAMS - NO SEPARATE LAB PRACTICALS; QUESTIONS ON PROSECTIONS, VERTEBRAE, etc. TESTED ONLY ON PICTURES IN COMPUTER EXAM

VIRTUAL TOUR OF GROSS LAB - PROSECTIONS, MODELS IN GROSS LAB AVAILABLE FOR STUDY

VIEW OF GROSS LAB AFTER WALK IN DOOR

DISSECTION TABLES – TOPS WILL BE OPEN



OTHER PROSECTIONS FOR STUDY LATER IN COURSE: DO NOT STUDY NOW

VIRTUAL TOUR OF GROSS LAB - PROSECTIONS, MODELS IN GROSS LAB AVAILABLE FOR STUDY

SINKS, FIRST AID SUPPLIES

PROSECTIONS FOR STUDY ON DISSECTION TABLES – TOPS WILL BE OPEN

‘ISLAND’ – MODELS, BONES, TOOLS IN DRAWERS



VIRTUAL TOUR OF GROSS LAB - PROSECTIONS, MODELS IN GROSS LAB AVAILABLE FOR STUDY

ON RIGHT AFTER ENTERING LAB - HONOR CODE

STUDENT WHO DID NOT OBEY HONOR CODE



LOOK TO YOUR RIGHT AFTER ENTERING - ON WALL IS MARSHALL SCHOOL OF MEDICINE HONOR CODE

VIRTUAL TOUR OF GROSS LAB - PROSECTIONS, MODELS IN GROSS LAB AVAILABLE FOR STUDY

SPINAL CORD, SCOLIOSIS,
AUTONOMIC NERVOUS SYSTEM
PROSECTIONS

DISSECTION
TABLES –
PROSECTIONS
WILL BE
PLACED IN
BAGS ON
TABLES,
TOPS WILL BE
OPEN

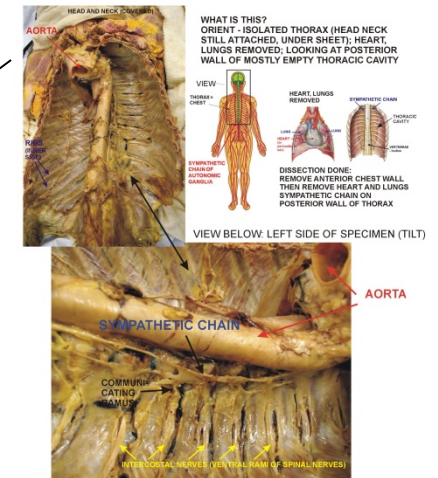


VIRTUAL TOUR OF GROSS LAB - PROSECTIONS, MODELS IN GROSS LAB AVAILABLE FOR STUDY

LABELED PHOTOS OF PROSECTIONS ON BOOK STAND



SYMPATHETIC CHAIN AND SPINAL NERVES IN THORAX 80



SPINAL CORD,
SCOLIOSIS OF
VERTEBRAE,
SYMPATHETIC
CHAIN (AUTONOMIC
NERVOUS SYSTEM)
PROSECTIONS

NOTE: THERE WILL SPRAY BOTTLES WITH WETTING SOLUTION ON TABLES; PLEASE KEEP PROSECTIONS MOIST; SPRAY AFTER VIEW

VIRTUAL TOUR OF GROSS LAB - PROSECTIONS, MODELS IN GROSS LAB AVAILABLE FOR STUDY

MODEL, BONES ON ISLAND FOR STUDY



5. OFFICE HOURS

Dr. Zill's office hours will be announced.

Meetings with students will be done on Zoom.

Please write Dr. Zill an email (zill@marshall.edu and sensillum@aol.com) to set up time for a meeting. Please allow time for a reply.

GOOD LUCK AND I LOOK FORWARD TO WORKING WITH YOU.